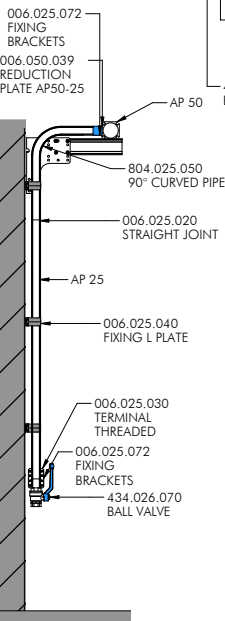
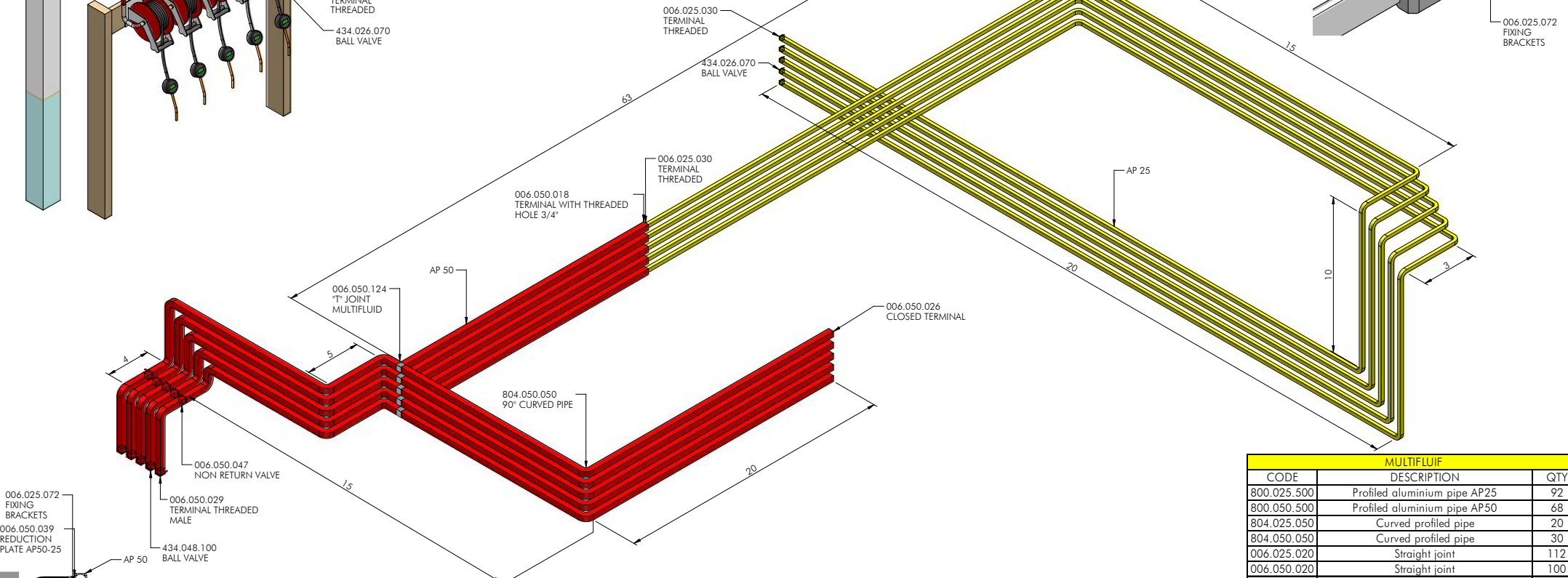
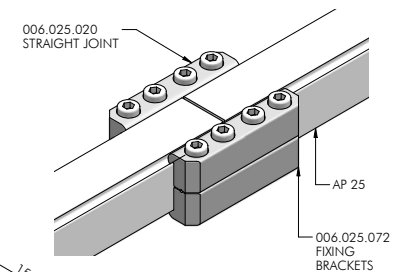
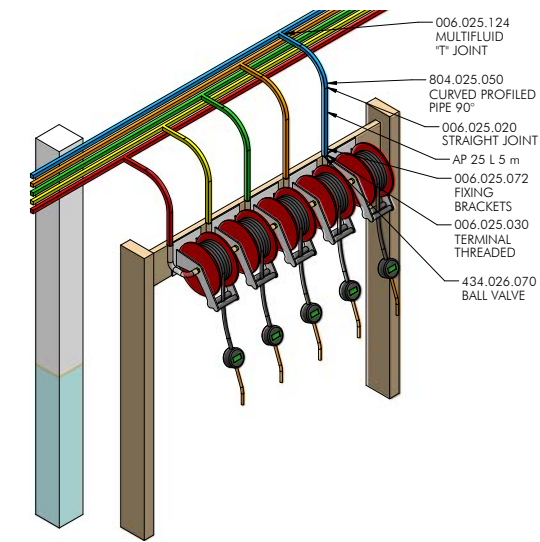


| N° 1 DROP COLUMN MULTIFLUID AP 25 / AP 25 | | |
|---|--------------------|-----|
| ART. NR | DESCRIPTION | QTY |
| 006.025.124 | Multifluid T Joint | 1 |
| 804.025.050 | 90° Curved Pipe | 1 |
| 800.025.500 | AP 25 L 5 | 1 |
| 006.025.020 | Straight Joint | 1 |
| 006.025.040 | L Plate | 3 |
| 006.025.072 | Fixing Brackets | 2 |
| 006.025.030 | Terminal Threaded | 1 |
| 434.026.070 | Ball Valve | 1 |



| N° 1 DROP COLUMN MULTIFLUID AP 50 / AP 25 | | |
|---|-------------------|-----|
| ART. NR | DESCRIPTION | QTY |
| 006.050.039 | Reduction Plate | 1 |
| 804.025.050 | 90° Curved Pipe | 1 |
| 800.025.500 | AP 25 L 5 | 1 |
| 006.025.020 | Straight Joint | 1 |
| 006.025.040 | L Plate | 3 |
| 006.025.072 | Fixing Brackets | 3 |
| 006.025.030 | Terminal Threaded | 1 |
| 434.026.070 | Ball Valve | 1 |

| MULTIFLUID | | |
|-------------|------------------------------------|-----|
| CODE | DESCRIPTION | QTY |
| 800.025.500 | Profiled aluminium pipe AP25 | 92 |
| 800.050.500 | Profiled aluminium pipe AP50 | 68 |
| 804.025.050 | Curved profiled pipe | 20 |
| 804.050.050 | Curved profiled pipe | 30 |
| 006.025.020 | Straight joint | 112 |
| 006.050.020 | Straight joint | 100 |
| 006.050.124 | "T" joint Multifluid | 5 |
| 006.050.026 | Closed terminal | 5 |
| 434.026.070 | Ball Valve | 5 |
| 006.025.030 | Terminal threaded male | 10 |
| 006.050.018 | Terminal with threaded Hole 3/4" | 5 |
| 006.050.029 | Terminal threaded male | 5 |
| 434.048.100 | Ball Valve | 5 |
| 006.050.047 | Non Return Valve | 5 |
| 006.025.041 | Snap clamp | 185 |
| 006.050.041 | Snap clamp | 136 |
| 006.025.072 | Fixing bracket | 122 |
| 006.050.072 | Fixing bracket | 115 |
| 006.050.080 | Outlet plate pressure relief valve | 5 |
| 006.050.049 | Manometer in glycerine | 5 |
| 104.515.318 | 25 bar colour sticker | 66 |
| 104.515.319 | 25 bar colour sticker | 88 |

Insert automatic pressure relief valve for pressure overload at the beginning of the line to ensure the pressure does not exceed 25 Bar.

The system's Oring seals are made from NBR 70.

Rienforce all joints with double fixing brackets.

Insert a timer valve to stop the pumps during the night.

If the recommendations noted here are not followed/need to be changed for any reason please contact TESEO srl's technical office.

This design, including its dimensions and list of materials, is purely indicative and is only intended for a commercial presentational use. We are reserved to create a free technical analysis based on more precise technical information.

Sviluppo AP 50 = 340 mt | Sviluppo AP 25 = 450 mt

Utilizzatore: / Revisione: / Modificazioni:

Materiali: NBR 70 / Descrizione: Naturale / Approvato: / Prescritto dalla TESEO per uso industriale e applicabile ad impianti a pressione superiore a 25 bar / Prescritto dalla TESEO per uso residenziale, industriale e distributivo a pressione inferiore a 25 bar

Disegnato: / Data: / Verificato: / Via degli Olivandieri 11 / 25012 Desenzano del Garda / **TESEO** / WWW.TESEO.IT

Oggetto: MULTIFLUID SYSTEM / N°: